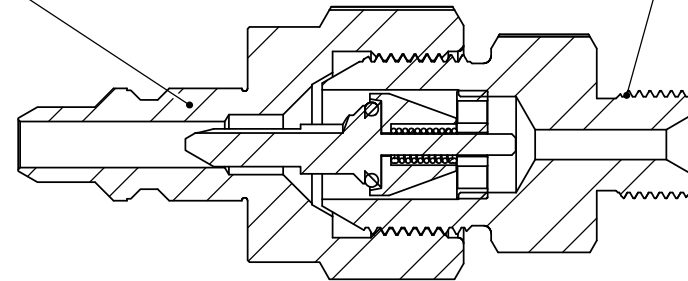


HPC600 Nipple

9/16" Type M Male
9/16-18UN Thread



SECTION A-A

REVISION NOTES AND DATES

UNLESS OTHERWISE SPECIFIED:

ALL DIMENSIONS ARE IN INCHES
TOLERANCES AS FOLLOWS:
1 PLACE DECIMAL (.0): ± 0.30
2 PLACE DECIMAL (.00): ± 0.020
3 PLACE DECIMAL (.000): ± 0.010
ANGLES: $\pm 2^\circ$

SURFACE FINISH: 63RMS
BREAK ALL EDGES: .010-.015
FILLETS & ROUNDS: R.015 - 0.30

THREADS UNIFIED CLASS 2A - 2B
CHAMFER THREADS 45° TO ROOT
30° CHAMFER IS OPTIONAL
FOR MALE THREADS ONLY

	NAME	DATE
DRAWN	MH	03/21/2025
CHECKED	KH	03/21/2025

DATE STARTED IN PRODUCTION:

03/21/2025



**ULTRA PRESSURE COMPONENTS
HOUSTON, TX**

TITLE:

HPC600 Nipple x 9/16" Type M Male
30,000 psi

SIZE	DWG. NO.	REV
A	HPC600-2-M9	Y
SCALE: 1:1	WEIGHT: 0.58	SHEET 1 OF 1

PROPRIETARY AND CONFIDENTIAL

THE INFORMATION CONTAINED IN THIS
DRAWING IS THE SOLE PROPERTY OF
ULTRA PRESSURE COMPONENTS. ANY
REPRODUCTION IN PART OR AS A WHOLE
WITHOUT THE WRITTEN PERMISSION OF
ULTRA PRESSURE COMPONENTS IS
PROHIBITED.