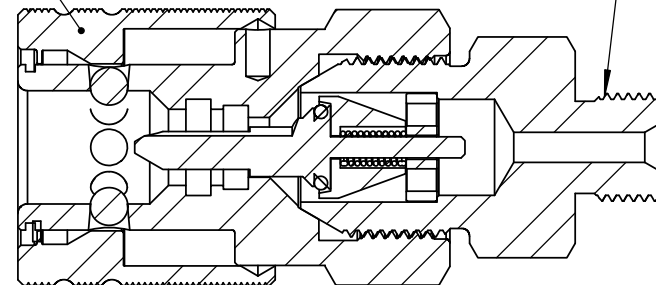


HPC600 Coupler

9/16" Type M Male
9/16"-18UN Thread



SECTION A-A

REVISION NOTES AND DATES

PROPRIETARY AND CONFIDENTIAL

THE INFORMATION CONTAINED IN THIS DRAWING IS THE SOLE PROPERTY OF ULTRA PRESSURE COMPONENTS. ANY REPRODUCTION IN PART OR AS A WHOLE WITHOUT THE WRITTEN PERMISSION OF ULTRA PRESSURE COMPONENTS IS PROHIBITED.

UNLESS OTHERWISE SPECIFIED:

ALL DIMENSIONS ARE IN INCHES
TOLERANCES AS FOLLOWS:
1 PLACE DECIMAL (.0): ± 0.30
2 PLACE DECIMAL (.00): ± 0.020
3 PLACE DECIMAL (.000): ± 0.010
ANGLES: $\pm 2^\circ$

SURFACE FINISH: 63RMS
BREAK ALL EDGES: .010-.015
FILLETS & ROUNDS: R.015 - 0.30

THREADS UNIFIED CLASS 2A - 2B
CHAMFER THREADS 45° TO ROOT
30° CHAMFER IS OPTIONAL
FOR MALE THREADS ONLY

	NAME	DATE
DRAWN	MH	03/27/2025
CHECKED	KH	03/27/2025

DATE STARTED IN PRODUCTION:

03/27/2025



**ULTRA PRESSURE COMPONENTS
HOUSTON, TX**

TITLE:

HPC600 Coupler x 9/16" Type M Male
30,000 psi

SIZE	DWG. NO.	REV
A	HPC600-0-M9	Y
SCALE: 1:1	WEIGHT: 0.86	SHEET 1 OF 1