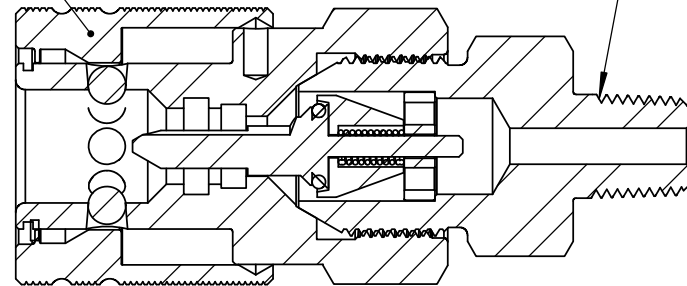


HPC600 Coupler

1/4"-18NPT
Male Thread



SECTION A-A

REVISION NOTES AND DATES

PROPRIETARY AND CONFIDENTIAL

THE INFORMATION CONTAINED IN THIS DRAWING IS THE SOLE PROPERTY OF ULTRA PRESSURE COMPONENTS. ANY REPRODUCTION IN PART OR AS A WHOLE WITHOUT THE WRITTEN PERMISSION OF ULTRA PRESSURE COMPONENTS IS PROHIBITED.

UNLESS OTHERWISE SPECIFIED:

ALL DIMENSIONS ARE IN INCHES
TOLERANCES AS FOLLOWS:
1 PLACE DECIMAL (.0): ± 0.030
2 PLACE DECIMAL (.00): ± 0.020
3 PLACE DECIMAL (.000): ± 0.010
ANGLES: $\pm 2^\circ$

SURFACE FINISH: 63RMS
BREAK ALL EDGES: .010-.015
FILLETS & ROUNDS: R.015 - 0.30

THREADS UNIFIED CLASS 2A - 2B
CHAMFER THREADS 45° TO ROOT
30° CHAMFER IS OPTIONAL
FOR MALE THREADS ONLY

	NAME	DATE
DRAWN	MH	04/01/2025
CHECKED	KH	04/01/2025

DATE STARTED IN PRODUCTION:

04/01/2025



**ULTRA PRESSURE COMPONENTS
HOUSTON, TX**

TITLE:

HPC600 Coupler x 1/4" NPT Male
15,000 PSI

SIZE
A

DWG. NO.
HPC600-0-4NM

REV
Y

SCALE: 1:1

WEIGHT: 0.86

SHEET 1 OF 1